

Function Models: Beyond FAST

Innovative “different” & proven applications



Saturday 8th June 8:00am – 12:00pm



Portland Marriott Downtown Waterfront



Solutions for a New Economy

In principle, we often take the easy way out and presume that “excellent work” will automatically result in the “best answer (solution).” Both Independent research and project management literature suggests this premise is categorically wrong.

Project Teams’ delivery has become more complex in a volatile environment of demanding margins and spectra of risks to consider. Contemporary high performing teams accept the challenge not only to project delivery “on time / on budget,” the Team is also charged with improving overall Project ROI.

This provides excellent opportunities for effective application of Advanced FAST Analyses.

Click to Register for this 1/2 Day Seminar

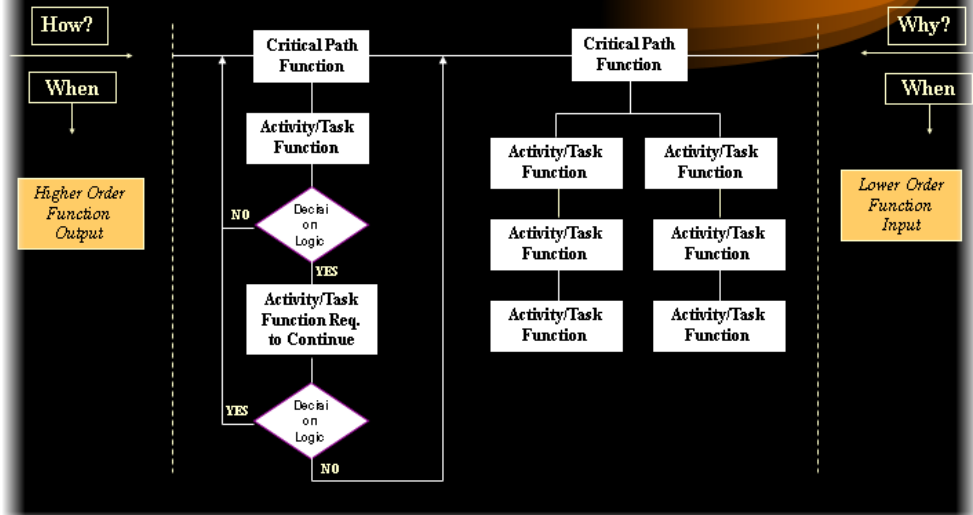
PDU’s = 4



21st century Function Modeling

Other Fast Diagram Conventions

Hybrid FAST Technique: Integrates activity-task level functions, and decision logic associated to critical path functions



Major concepts addressed are innovative application of FAST to improve Overall Business Process:

- How to make decisions on how the business machine can be optimized
- How to Engage Multidiscipline and serious commitment to effective multidiscipline communications and interfaces

- How to interface labor and materials cost models to simulate as-is and to-be changes surrounding a proposed improvement
- How to enhance project and organizational management planning, delight teams and organizations in planning their work



Decision & Value consulting

Join us!

Come learn 21st century function modeling tools and techniques to help with a variety of value improving projects. This half day class is designed for value, quality, process, and project improvement practitioners wanting to learn more about the latest different kinds and styles of Function Modeling.

Participants will be introduced to intermediate and advanced fundamentals of Function Science, interfacing business processes, organizations, and project delivery with Function Analysis System Technique (FAST) models. In addition, contemporary tools will be shared in building Process Cost Models. Lenzer will share his innovative SVS FAST Tool with capabilities to interface labor and materials cost models to simulate as-is and to-be changes surrounding a proposed improvement. Interfacing these components of cost to function broadens the analytical capability for value, quality, process and project improvement practitioners in government and industry.

It's all about planning for an Effective Communication Event.



As soon as you know you are required to conduct a FAST workshop start the conversation & get an appropriate venue secured!
Often 3-4 weeks ahead required.



Contemporary Organizations understand the power of such methods as Hybrid FAST & Organization FAST leading to resource loaded schedules and project development cost

How can Value Engineering / Value Management principles enhance project and organizational management planning, delight teams and organizations in planning their work and engage senior management in implementing organization recommendations? The methods presented have been used over more than 2 decades on Major Projects globally with significant Capital expenditures

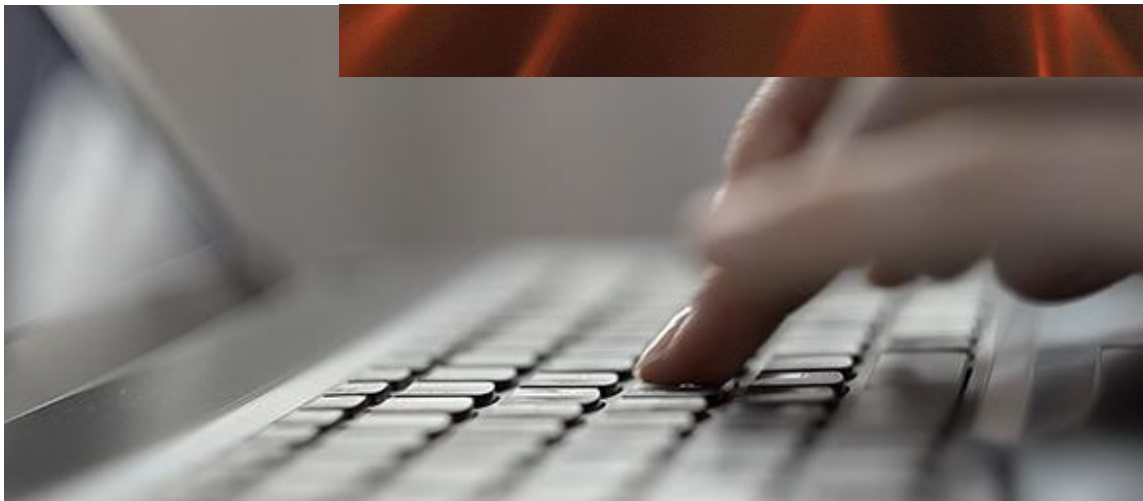
In Major Project development and delivery, decisions are often complex and interrelated, inherently uncertain, multi-dimensional and often highly subjective. Managing and executing these decisions requires a dedicated, and serious

commitment to effective multidiscipline communications and interfaces. Application of the FAST methodology to organization mapping has been proven to be a key communication tool between the Owner Organizations, the Project Team and other external groups.

This FAST framework application can be understood and owned by all the stakeholders (internal and external), resulting in a unified functional plan.

The FAST map methodology is particularly suited for sharing stakeholder intentions and needs without revealing sensitive economic and strategic information. A requisite agenda and knowledgeable facilitator are generally needed to drive most FAST efforts.

So, if this tweaks your interest Let's talk.



Learn a set of Proven & Effective Innovative uses of FAST Modeling

A pragmatic application of the FAST process / VM methodologies will provide characterization and visualization so Project Team and Management can agree on the way forward and resources required

- 1. Tool provides organizational picture to make decisions on how the business machine can be optimized.**
- 2. Interfaces Process Models in the vertical dimension of the FAST diagram as those processes relate to the Function**
- 3. HYBRID FAST EXAMPLES:**
 - a. FABRICATION OPERATIONS
 - b. SUPPLY CHAIN PROCESS
 - c. TELECOMMUNICATIONS SERVICES BUSINESS PROCESS
 - d. MATERIAL ACQUISITIONS
 - e. TRANSPORTATION
 - f. FACILITIES

4. ORGANIZATION FAST MAP

- a. Causes the individuals to Operationalize" their systems thinking discussion.
- b. Provides a simple, yet elegant, method to drive down to the detail of the Organizational Functions to be achieved in the System.
- c. Exhibits the interfaces and dependencies with clarity.
- d. Differentiates the "As we do it state" from the "As we should do it state."
- e. Supports assignment of Roles & Accountabilities,
- f. Is a tangible graphic to prove the understandings developed in the Teams' System Thinking work do exist, and which will be referenced in a consistent and repeatable business process.
- g. Is a reference point for discussions with new team members, other internal Organizations, Clients, & Contractors
- h. The Organizational Map may be "dimensioned" in a variety of ways, for example: What are we doing Well / Poorly?
- i. What most influences Schedule & Risk?

Instructors Cadre

James McCuish is Managing Partner in Pinnacle Results LLC. He has served in both Management & Consulting roles in Worldwide Operations for 40 years in. He practices Value Engineering / Analysis, Decision Management / Analyses and Project Management.

Jmccuish@msn.com

Bruce Lenzer, a Certified Value Specialist, Fellow of SAVE International, and Certified Quality Manager. Consults in technical, managerial, and advisory positions in Fortune 500 companies / commercial and government organizations. He currently serves as President of the Lawrence D. Miles Value Foundation. Past President of SAVE. Consults in Business Process Reengineering and Value Methodology tools, methods, and techniques.

Blenzer@aol.com

Charles Jennings CEO

Leading Edge Collaboration has 40 years experience in upstream oil and gas production activities. Has led Major Project teams in Trinidad, Norway, Egypt, United Kingdom and the US. He was an Appraise (FEL) Advisor with BP and supported Major Capital investment teams worldwide using front-end appraisal methodologies, value engineering.

cw Jennings@earthlink.net

REGISTER NOW!

Decision Analysis for Value Engineers